

System Specifications

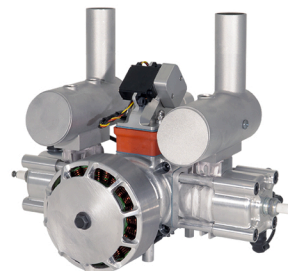
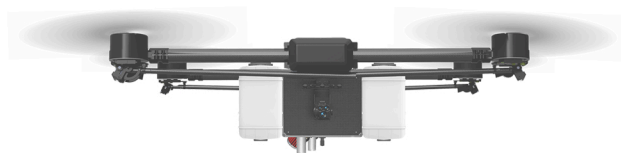
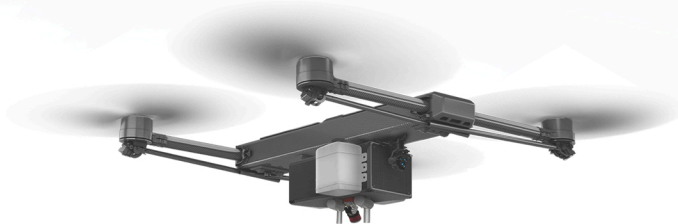
Aircraft Dimensions	162 cm x 160 cm x 30 cm (64" x 63" x 12") with propellers
Maximum Payload Weight	4 kg (8.8 lbs)
Maximum Takeoff Weight	25kg (55 lbs)

Limitations

Maximum Operating Temperature	+38° C (100.4° F)
Minimum Operating Temperature	-25° C (-13° F)
Maximum Wind Resistance	up to 25 km/h (15.5 mph)
Relative Humidity	0% to 90% non-condensing
Operating Ceiling	2438m (8000ft) ASL
Density Altitude Limit	2438m (8000ft) ASL

Flight Characteristics

Climb Rate	590.6 ft/min (3m/s)
Descent Rate	590.6 ft/min (3m/s)
Maximum Turn Rate	90 deg/s
Maximum Operating Airspeed (Manual) ..	38 knots (72 km/h)
Maximum Automated Mission Airspeed ...	38 knots (72 km/h)
Maneuvering Airspeed	29 knots (54 km/h)
Maximum Hover Endurance	up to 3 hours
Maximum Flight Endurance	up to 3 hours
Maximum Controller Signal Range	Varies by configuration
Maximum Altitude Angle	34 degrees
Maximum Turn Rate (Yaw)	90 degrees/sec



Engine Specifications:

Draganfuel - Ignite 70cc Powered by Pegasus

Engine Type	70cc two-stroke	2-Stroke Oil Ratio	40:1
Engine Displacement	70cc (4.29 cubic inches)	Fuel Delivery	Fuel-injected
Overall Base Weight	3.5 kg (7.72 lbs)	Starting	Self-Starting
Maximum Power Output	4,000 Watts	Cooling	Liquid-Cooled
Ideal Power Output	2,000 to 3,500 Watts	Introductory TBO	200 Hours
Operating Voltage	24V through 50V	Throttle Control	Automatic
Fuel Type	Gasoline 87 Oct & higher, or multifuel	Airworthiness Standard	STANAG 4703
Ignition	Capacitive Discharge		

* Specifications are targets and may change throughout the course of continuous improvement.